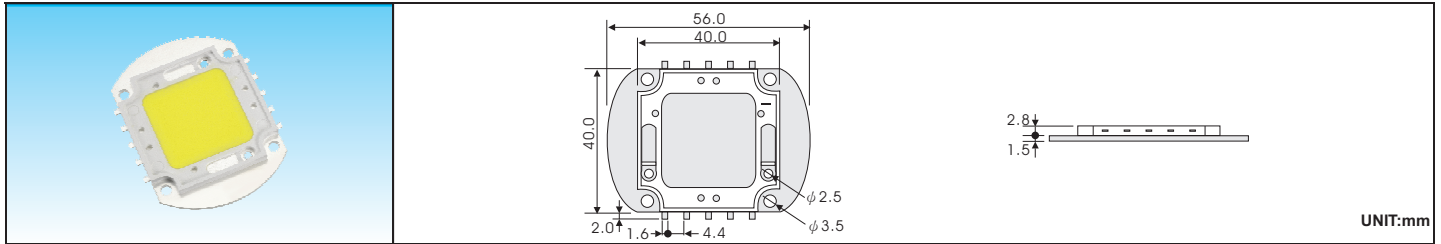




High Power 30W LEDs

IF=1750mA Ta=25°C

| Device No | Color | | Wavelength(nm) | | VF | Brightness(lm) | View |
|-----------|---------|------|----------------|-------------|-------------|----------------|------------------------|
| | Emitter | Lens | λp | λd | Typical (V) | IV | Angle $2\theta 1/2$ |



| | | | | | | | | |
|-----------------|--|--------------|--------------------|--------|-----|------|------|-----|
| HPR40E-43K30G | | Green | White diffused | 520 | 525 | 17 | 2150 | 120 |
| HPR40E-44K30Y | | Yellow | | 595 | 590 | 10.5 | 1640 | |
| HPR40E-45K30R | | Red | | 635 | 625 | 10.5 | 1690 | |
| HPR40E-48K30B | | Blue | | 462 | 465 | 17 | 810 | |
| HPR40E-48K30BG | | Blue | | 462 | 465 | 17 | 910 | |
| HPR40E-19K30BW | | Cool White | Yellow diffused | 8000°K | | 17 | 2030 | |
| HPR40E-19K30BWG | | Cool White | | 8000°K | | 17 | 2300 | |
| HPR40E-19K30W | | Pure White | | 6000°K | | 17 | 2030 | |
| HPR40E-19K30WG | | Pure White | | 6000°K | | 17 | 2300 | |
| HPR40E-19K30NW | | Nature White | | 4000°K | | 17 | 1985 | |
| HPR40E-19K30NWG | | Nature White | | 4000°K | | 17 | 2185 | |
| HPR40E-19K30YW | | Warm White | | 3300°K | | 17 | 1830 | |
| HPR40E-19K30YWG | | Warm White | | 3300°K | | 17 | 2070 | |